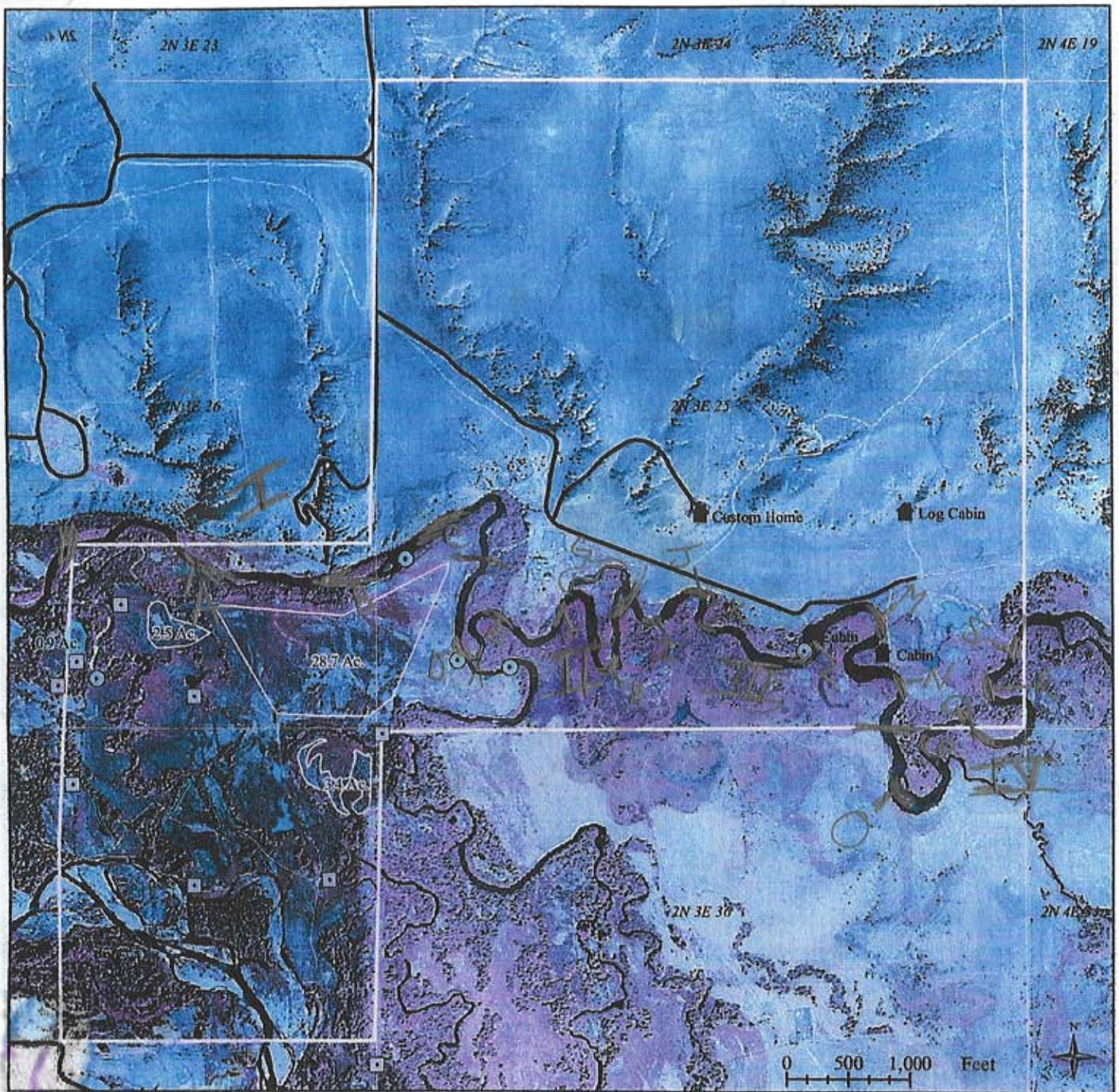


Twin River Ranch Fly Fishing

Two of Montana's finest trout streams run through the Twin Rivers Ranch. The West Gallatin which originates in Yellowstone Park and the East Gallatin which forms at the confluence of Rocky Creek and Bridger Creek in Bozeman are famous for their trout populations and natural beauty. My name is Austin Lowder, and I have been outfitting fly-fishing trips across Montana for the past thirteen years. I have been outfitting the Langel family for the last five years. Over these years I have found the fishing to be even better than I expected it to be. The diversity of the water on the ranch is exceptional. The West Gallatin is a freestone stream that is ever changing from one year to the next with different back channels and holding water determined by the run-off season. The East Gallatin is also a freestone stream at its headwaters, but as the stream flows, it picks up many spring creeks. By the time you get to the lower river, the water is very much like a big spring creek. Two very different rivers come together below the ranch forming what we call the Lower Gallatin. The Lower Gallatin is a unique floating river and is home to some of the biggest fish in the state. These fish make their way upstream at different times of year right into the Twin River Ranch. Spring and Fall on the ranch offer a good chance for the fish of a lifetime. I can say without hesitation that the fishing opportunities here are second to none.

The ranch water on the East Gallatin is very easy to break up into logical fishing sections which I call beats. The beats are roughly a mile long and are perfect for fishing a full day. Section I starts at the downstream property line and ends at the bridge. Section II goes from the bridge to Goat Island. Section III is from the Goat Island to the Upper Cabin. Section IV is from the upper cabin to the upstream property line. Section V is the state land above the ranch. I have fished every beat on this ranch many times and have found them to be unique. I like to think of the East Gallatin in this neck of the woods as a mini Missouri River. The pods of rising trout found on the ranch and their fighting ability rival those on the mighty Missouri River. Their beauty and spirit will leave even the most experienced anglers in complete awe. These big trout are truly hard to land. The challenges this stream offer are endless, and the variety of tactics you can employ to catch the fish are ever changing. The stream is open year around, and therefore the flies and their presentations change with the seasons.



Twin River Ranch

Sections 26 & 35 of Township 2 N, Range 3 E

Montana Location



- | | | | | | |
|--|---------------------|--|--------------------|--|-----------|
| | Property Boundary | | Wind Row | | Buildings |
| | Existing Food Plots | | Proposed Food Plot | | Pond |
| | Proposed Food Plot | | Duck Blind | | Roads |
| | Deer Stand | | Sections | | |

DATA SOURCES: Food plot data, wind rows, duck blinds, deer stands, and ponds are from GPS data collected by The Little River Company, Inc. Roads, sections, and property boundary are from the Gallatin County GIS Department. Background imagery is digital Color Infrared (CIR) photography, taken 9-9-01, and available from the Gallatin Local Water Quality District. Actively growing vegetation appears red. Actively growing vegetation in late summer is usually a result of human-initiated irrigation or natural high water tables.

DISCLAIMER: Data represented in this publication comes from external sources and is to be used for general planning purposes only. Carto-Logic GIS, Inc. or employees of Carto-Logic GIS, Inc. cannot guarantee the accuracy of this data and therefore assume no liability and are held harmless for errors and/or omissions contained herein.

The aquatic life in the East Gallatin is diverse. Caddis flies, May flies, and Stone flies make up most of the bugs on the trout's menu. Crayfish, Sculpin, White fish and an array of baitfish satisfy the trout's need for a big bite. Depending on the time of year or even a particular day, a wide variety of flies can lead to big success on this river. Large hatches of bugs occur throughout the year and there are rising pods of fish throughout the entire river. There is nothing better in trout fishing than to see a flat full of big fish sipping bugs. Locate these pods of fish that are scattered throughout the ranch, find the right fly, and you can stand in one place and catch lots of fish. Nymph fishing is pretty standard on this river and will catch good numbers of fish any time. Streamer fishing is my personal favorite way to catch big trout, and with the numbers of crayfish and baitfish in this river it will almost always yield good catch rates for large trout. Fly selection from one day to the next is critical for success day in and day out.

My experience fishing the ranch has allowed me to identify the holes that have good populations of trout. Not all the water is created equal. I feel like there are trout scattered throughout most of the river and no matter where you fish you do have a chance at catching the next trophy trout. However, there are definitely locations within the beats that are more productive than others. If I am fishing the right flies and the fish seem to be biting I have caught as many as 25 good size trout out of one pool, plus I know we did not catch them all! On some days of guiding I have witnessed anglers catching up to 100 trout in a day out of the East Gallatin. On average, though, I expect to catch 20 or 30 in a day. I cannot specifically say what the numbers of trout are in this river, but I always get the feeling the populations are high. Some days you do catch more brown trout and on other days, you catch more rainbows. Most of the fish average 14-16 inches with many over 16 inches. I have witnessed numerous browns and rainbows being caught over 20 inches. There always seems to be a different set of fish out feeding each day which tells me that the populations are healthy and self sustaining. I have lettered on the map the holes that I feel are the best on each section of the East Gallatin River. Reading the water and matching the hatches in these locations will surely lead to some great adventures in fly fishing.